

COVID-19 POLICY FOR MATILDA TICKET HOLDERS:

In an effort to maintain safety, masks are required at all times while indoors, regardless of vaccination status, per California Department of Public Health Guidance. Please keep in mind this statement is subject to change pending state, county, and local health and safety regulations regarding COVID-19.

Thank you for support and attention in doing your part to keep the Arts & Learning Conservatory community safe.

CONSERVATORY COVID-19 PROTOCOLS

MASKS

- Face masks or coverings are worn indoors by all (including all teaching artists, staff, students, parents, guests, vendors, and visitors), regardless of vaccination status.
- Face masks are optional outdoors.
- Disposable masks are available for students and visitors who do not remember to bring a cloth mask.

PHYSICAL DISTANCING:

- Students and instructors will maintain a physical distance of 3 feet during class.

SELF-MONITORING FOR ILLNESS:

- Students are being asked to self-identify and report COVID-19 symptoms such as fever, chills, dry cough, shortness of breath, recent loss of taste or smell, headaches, muscle pain, or sore throat and stay home if any symptoms are exhibited.
 - If a student begins experiencing symptoms while at ALC, parents or approved emergency contacts will be called and the student will be sent home.
- It is the continuing responsibility of parents of students and employees to self-monitor their health each day before coming to the ALC studio, by utilizing the following symptom decision trees:

Student Symptom Decision Tree

Screen all students for potential COVID-19 symptoms or exposure

Low-risk: general symptoms



Fever ($\geq 100.4^{\circ}\text{F}$)



Sore throat



Congestion/runny nose



Headache



Nausea/vomiting/diarrhea



Fatigue/muscle or body aches



Cough



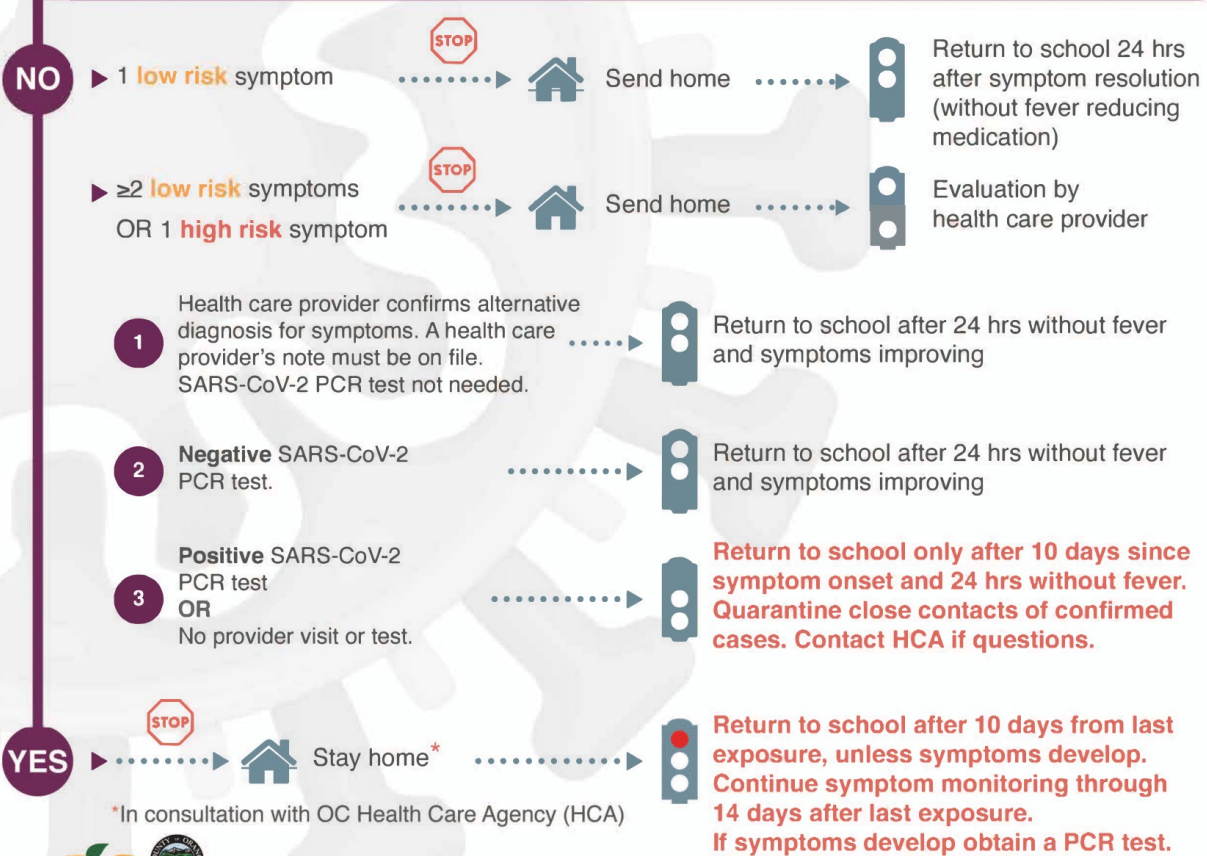
Difficulty breathing



Loss of taste/smell

Exposure to COVID-19 positive person?

Close contact: Within 6 ft for > 15 minutes cumulative (regardless of mask)



*In consultation with OC Health Care Agency (HCA)



This care pathway was designed to assist school personnel and is not intended to replace the clinician's judgment or establish a protocol for all patients with a particular condition. Diagnosis and treatment should be under the close supervision of a qualified health care provider. Guidance might change 12-10-20

GETTING TESTED & QUARANTINING:

- All exposed individuals regardless of vaccination status are required to notify Arts & Learning Conservatory immediately and should be tested 3-5 days following the date of their exposure.
- Any person experiencing COVID-like symptoms is expected to quarantine until COVID-19 is ruled out.
 - Fully-vaccinated individuals with no symptoms do not need to quarantine after exposure.
 - Fully-vaccinated individuals experiencing symptoms are expected to quarantine for 14 days after exposure or until COVID-19 is ruled out with a negative test.
 - Non-vaccinated or partially-vaccinated individuals (with or without symptoms) are expected to quarantine for 14 days after exposure or until COVID-19 is ruled out with a negative test.
- Anyone with symptoms of COVID-19 infection must not return for in-person instruction until they have met the following criteria:
 - At least 24 hours have passed since resolution of fever without the use of fever-reducing medications; and
 - Other symptoms have improved; and
 - They have a negative test for COVID-19, OR a healthcare provider has provided documentation that the symptoms are typical of their underlying chronic condition (e.g., allergies or asthma) OR a healthcare provider has confirmed an alternative named diagnosis.

CLEANING, VENTILATION, AND HAND HYGIENE:

- If a person has been sick with COVID-19 within the last 24 hours, the space they occupied will be cleaned and disinfected immediately.
- The facility has been assessed for ventilation functionality to ensure adequate air exchange, and there is a HEPA filter in each classroom.
- Soap and hand sanitizer dispensers are checked daily to ensure adequate supply and access.